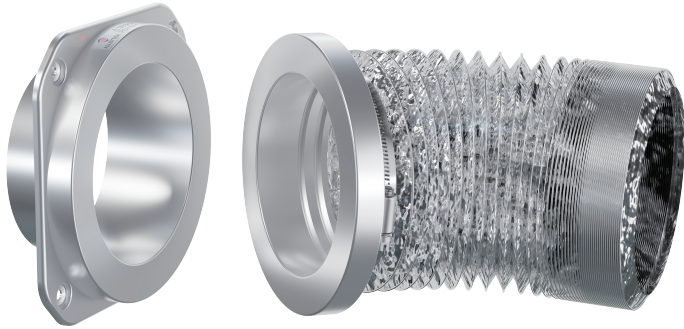


WARNING

DV180

MAGNETIC DRYER VENT COUPLING



- Please refrain from playing with the powerful magnets. There is a risk of injury from pinching.
- Wear gloves when handling. Keep hands, body, clothing, jewellery, tools, and debris free from mating magnetic surfaces.
- The magnet could cause damage to electronic devices and potentially erase magnetic storage medium.

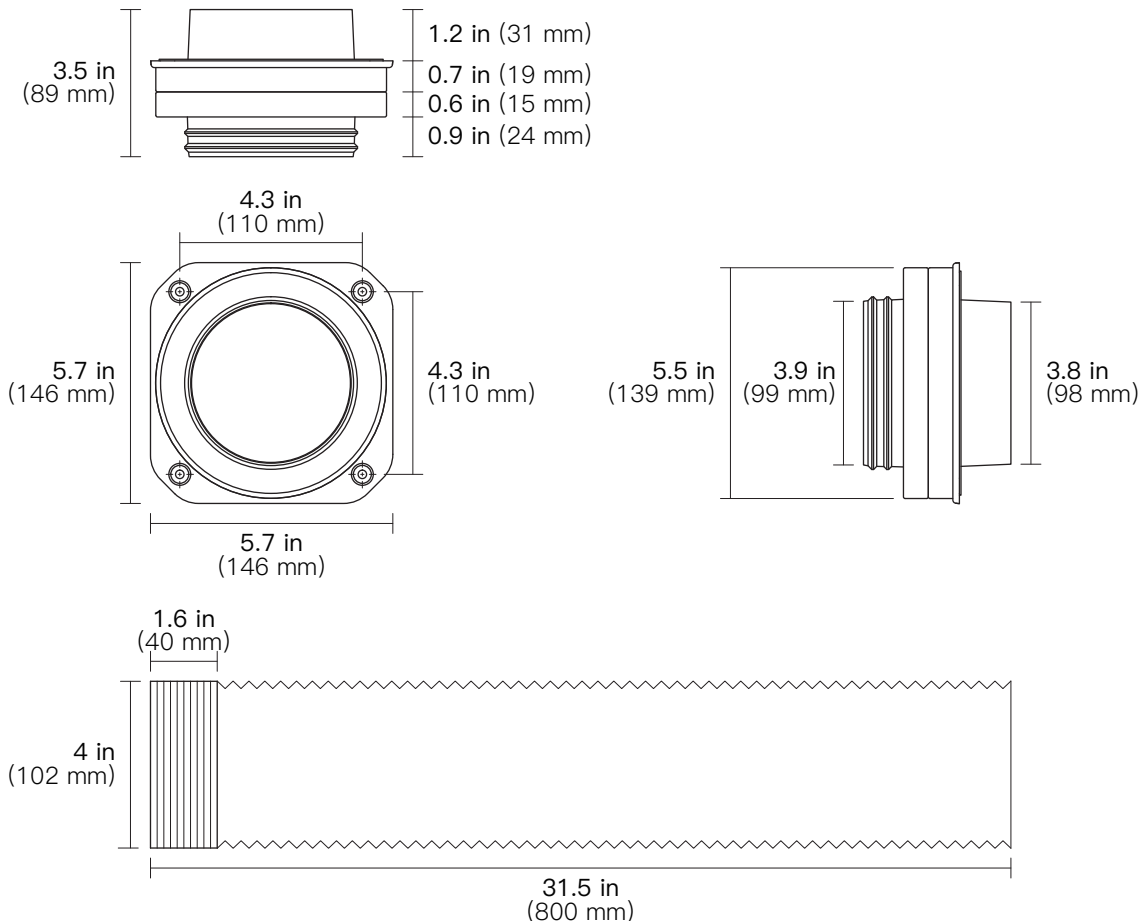
Pacemaker Warning: Strong magnets in close proximity have been known to interfere with some types of pacemakers with potentially fatal consequences. Consult a physician for precautions when handling powerful magnets.

Disclaimer: If you are in any doubt about your ability to install this equipment or its suitability for your particular installation, seek the advice of a qualified professional.

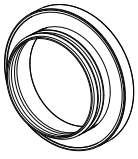
USER GUIDE

www.allottex.com
 support@allottex.com
 (888) 995-9866
 (Monday to Friday, 8:00 am to 7:00 pm PST)

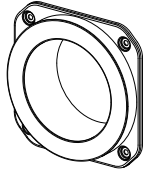
DIMENSIONS



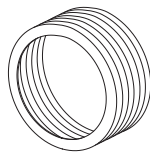
ACCESSORIES



Dryer Vent Adapter x1



Wall Assembly x1



Vent Hose x1



Hose Clamps x2



Wall Anchors x4

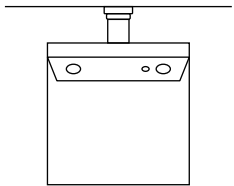


Screws x4

INSTALLATION

Prerequisites of Install: Dryer vent path must continue straight behind dryer or within 1–2 inches of alignment. Dry wall should already be hung. (For new installations you may need a dryer exhaust wall boot.)

Tools Required: Tape measure, pencil, screwdriver or screw gun, tin snips, safety glasses, gloves, AC voltage sensor.

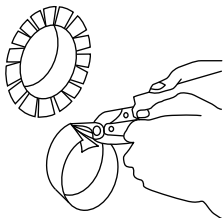


Step 1:

Look behind the dryer and ensure that the dryer exhaust and wall exit point are reasonably aligned within 1–2 inches.

Step 2:

Unplug the dryer and remove any existing duct system if necessary.



Step 3:

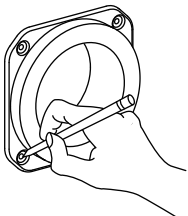
Cut the end of the duct system approximately flush with the wall surface or notch and bend if necessary.

Step 4:

Hold the wall assembly to the wall centred around the wall exit point and mark the screw hole on the wall.

NOTE:

Some installations may benefit from notching or removing the baseboard.

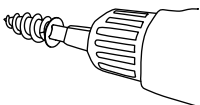


Step 5:

If the wall assembly is on drywall, screw the supplied self-tapping wall anchors into the drywall at the marked locations. If the wall mounting location is on the baseboard or other wood surface, proceed to step 6.

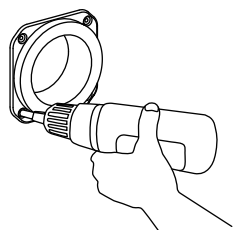
WARNING!

Always check for live wires with the AC sensor before driving screws into the drywall!



Step 6:

Hold the wall assembly in position and drive the supplied fixing screws through the bracket hole and into the wall anchors. If on a wooden surface, drive the screws directly into the wood.

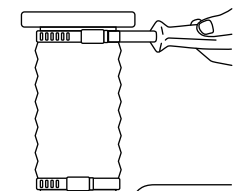


Step 7:

Use the supplied hose clamps to secure each end of the hose to the dryer exhaust port and dryer exhaust adapter.

Step 8:

Plug the dryer in and push it into position, allowing the powerful magnets to self-align and complete the duct connection.



Step 9:

A quick visual inspection to check for proper sealing and you are done!

NOTE:

Use a mirror and torch if necessary in confined spaces.